



# TRAPEZOIDAL FLUMES

- Low Profile
- Excellent Low Flow Resolution
- Low Maintenance
- Great Self-Cleaning
- Engineered & Built to Order



25 year  
Corrosion  
Warranty

As a leader in the flume fabrication revolution that began over forty years ago, Plasti-Fab has thousands of flumes installed in corrosive environments around the world. Plasti-Fab products are fabricated from highly corrosion resistant composite fiberglass reinforced plastic (FRP) with a 25 year corrosion warranty. Plasti-Fab is recognized around the world as an experienced innovator providing composite solutions for municipal and industrial fluid measurement applications.

## KEY FEATURES

- Precise Throat dimensions for accurate flow measurement
- Eight standard sizes available
- Standard 1/4" wall thickness
- Free standing with up to 30" of Water Depth
- Premium Grade Isophthalic Gel Coat for long term corrosion resistance
- Head Gage for visual fluid level check
- Reinforced with engineered box rib design for strength on larger sizes

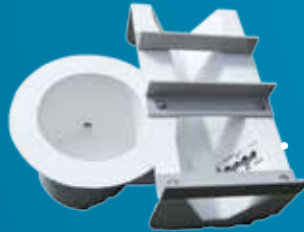


FOR OUR COMPLETE  
PRODUCT CATALOG  
VISIT US ONLINE AT  
[WWW.PLASTI-FAB.COM](http://WWW.PLASTI-FAB.COM)

# DESIGN FEATURES AND ACCESSORIES

## CONVENIENT FEATURES & ACCESSORIES

- Trapezoidal Flumes standard with:
  - Anchor Clips
  - Molded in Head Gage of 100ths of a Foot and Centimeters
  - Temporary Spreaders
  - 2" Flange
- Available with:
  - Inlet Adapter with Pipe Stub
  - Inlet Adapter to bolt to Vault Wall
  - Inlet Wingwalls
  - Outlet Adapter with Pipe Stub
  - Outlet Adapter to bolt to Vault wall
  - Outlet Bulkhead
- Optional Accessories:
  - Ultrasonic Bracket
  - Bubble pipe with Cavity
  - Sample pipe with Cavity
  - Pressure Transducer Cavity
  - pH Probe Cavity with Liftout Bracket
  - Stilling Well



### Additional customization options:

- Threaded Taps
- Permanent Cross Ties
- Caulking Collar
- Slip Flange
- Neoprene Boot with Stainless Steel Bands
- Head Gages in MGD, GPM, CFS, Etc.
- Capacitance Probe Side Cavity with Stainless Steel Ground Plate
- Top Grating
- Sectioning
- Two Vial Bubble Level
- Tranquilizing Racks
- Energy Absorbing Basins
- Many specially engineered solutions are available, such as integration into Packaged Metering Manholes -- Please consult a representative or the factory

The Plasti-Fab line of flumes is THE premier line of flumes available for measurement of fluids. Precisely molded throat dimensions make it possible for consistent and accurate flow measurement. All Compositematerials are guaranteed against corrosion for 25 years.

CONTACT US FOR MORE INFORMATION

PLASTI-FAB, INC.  
P.O. BOX 100  
TUALATIN, OR 97062-0100  
(503) 692-5460  
SALES@PLASTI-FAB.COM

WWW.PLASTI-FAB.COM

